



The Informer

you can
Canon

February 2010 - Issue 62

Who built the best snowman?



Well what a start to the year! If we were to look back at the month of January, the hottest topic (ironically) would be the

snow that not only covered much of the country but also evoked many childhood memories.

Saying that, it has also been an encouraging start to the year. Yes the snow did fall but after an initial couple of heavy downfalls the country was back up and running again and we were able to get the year under way - and the children back to school!

This month's issue of 'The Informer' has certainly not fallen foul of the weather; it features all the latest news

an views as always and if you haven't heard so already you can read about how our sales director, James Fletcher, took his winter 'pursuits' a little too far...

Please enjoy, and remember to enter our monthly competition if you fancy winning a bottle of Champagne.

All the best

Aaron



Bubbly for Paul



Seen collecting his bottle of Champagne is Paul Grisley of Rycote. Paul correctly guessed that the two mystery stars were Jenifer Lopez and Amy Winehouse.

Rycote is a manufacturer of microphone windshields (windscreens) and microphone shock mounts, designed to provide isolation against wind noise and unwanted shock vibrations.

Rycote Microphone Windshields Ltd

Libby's Drive

Slad Road

Stroud

GL5 1RN

01453 759338

www.rycote.com

● Paul Grisley of Rycote collects his Champagne

Tile FLAIR

Landing with a very big...

We hand a big warm welcome to Tileflair here at C&G Business Equipment Ltd. Not only does our new customer add to our growing list of clients but the company has joined us by purchasing a new imageRUNNER ADVANCE 7065 loaded with a booklet finisher and 3500 sheet paper stack.

James Fletcher, our "one armed" Sales Director had only one complaint when Tileflair took delivery. "With only my one arm in action I found it frustrating not being more involved with the device demonstration and training." However, James did add it was still satisfying to watch one of his colleagues demonstrate the lightning fast touch screen, the feature rich system and superior colour output.

For those of you who are not aware James took it upon himself to make the most of the snow dump that January brought with it.

James said: "At first I thought it would be a good idea to be towed behind a quad bike on my snowboard; however, one large tumble and a broken collar bone later it wasn't

as appealing to me."

"One thing's for sure though, I have had no sympathy from my colleagues, which is quite understandable, and our clients have found it most amusing." Visit the C&G blog for further information on James' accident and other happenings at the company here:

<http://cgbusinessequipment.blogspot.com>

Tileflair MD, Matthew Johnson (pictured right with James and his new Canon system) was understanding over James 'accident' and was very pleased at getting delivery of his new Canon imageRUNNER ADVANCE device.

Established in 1972 Tileflair is a privately owned ceramic tile distributor in the UK. The company stocks an exceptional range of high quality tiles sourced from around the world in addition to a huge range of industry leading adhesives, grouts and accessories.

Some top tips from Tileflair

For newly plastered walls allow at least one month for the plaster to dry out before tiling. Correctly applied plaster need not be sealed prior to tiling.

'Snow joke' 6 things you never knew



The average snowflake has a top speed of 1.7 metres per second.

They are always hexagonal but the majority are not perfectly symmetrical - uneven temperatures, dirt and other factors usually cause them to be lopsided.

It is a myth that Eskimos have 100 different words for 'snow'.

Chionophobia is a fear of snow.

Around 12 per cent of the Earth's land surface is covered in permanent snow and ice.

Japanese scientists have developed a snow-eating robot, fitted with GPS, which shovels snow and compacts it into ice bricks.



Tile FLAIR

...Splash!



Taking into account windows and doorways, use the tile you are fixing as a gauge. Set out the horizontal position of the tiles so that even cuts are made on either side of windows and small cuts are avoided in the corners of the room.

Except for windows, always start from external corners with a full tile and cut tiles into internal corners. Avoid cuts of less than 1/4 of the tile's width. When tiling use plastic spacers or pegs to achieve a consistent and even spacing throughout the tiled area. A variety of sizes of spacers and pegs are available for your tiling requirements.

Some tiles have a glazed edge and some are mitred. Most tiles however, have an unfinished edge. Plastic or metal trim is available to create an improved finish for most situations where the tile edges are visible, for example on external corners.

It is very important that you do not fix tiles tight into any internal corner. Always allow a gap equivalent to at least the thickness of the tile. This gap will be compensated for and will not show when the adjoining wall is tiled.

Where there is likely to be movement, e.g. internal vertical corners and where tiled surfaces meet another surface at an angle, avoid grouting the inside of the intersection or

internal corner. Examples of such intersections are, where the tiles meet the bath and where the tiled wall meets the floor. Always use a silicone sealant such as BAL Microseal Silicone Sealant instead, as it is much more flexible and will not usually be affected by the movement. Try to pick a sealant with a colour close to the colour of the grout you are using.

Tileflair has many branches including Gloucester.

90 Bristol Road

Gloucester

GL1 5SQ

Tel: 01452 418800

Fax: 01452 310144

www.tileflair.co.uk

The new imageRUNNER ADVANCE takes document communication to the next level. Built to enhance document workflows they offer outstanding productivity with high quality print capabilities whilst safeguarding your confidential information and providing environmental support.

Efficiency/Productivity

- Ability to scan and reuse hardcopy documents
- Personalised User interface
- Fast Scanning capabilities
- Advanced scanning into business applications

High Quality

- Superb print quality (1200dpi)
- Paper weights up to 300gsm
- Mixed media support

Security

- Advanced security
- Document confidentiality
- Assist with compliance requirements

Robust finishing

- Booklet & Staple finishing
- Hole Punch capability
- Document folding and Insertion



When they were kids

The mystery guests that featured in last month's newsletter were:

Deco and Robin Van Persie

The lucky winner is:

**Sarah from
Highfield Nurseries**



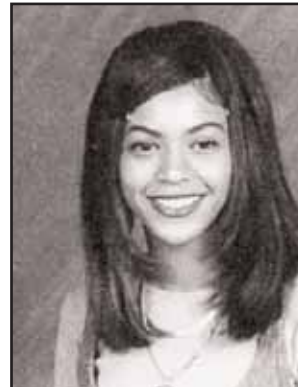
Congratulations Sarah, your bottle of bubbly will be with you soon.

This month it's back to the world of pop.

Two young stars who soon found fame and fortune with their song and dance routines.

The first appeared alongside Austin Powers at one stage while the other has been seen sitting next to a certain Mr Cowell!

Please email your answers to info@cgcopiers.co.uk and put **'February quiz'** in the subject box.



Good luck!

And finally - last month saw...

William Pollock McLaren, famous Scottish Rugby Union commentator, pass away aged 86

A record ten goals scored in the League Cup semi-final clash between Aston Villa and Blackburn Rovers

Nigh on 200,000 lives lost in the Haiti earthquake disaster

Contact us

**C & G Business
Equipment
Unit 13 Capitol Park
Pearce Way
Bristol Road
Gloucester
GL2 5YD**

Tel: 01452 332270

Fax: 01452 332271

info@cgcopiers.co.uk

www.cgcopiers.com