



The Informer

you can
Canon

October 2008 - Issue 46

Into the home straight



We now move into the final quarter of 2008 and I'm sure that we all say this each and every year but, doesn't time fly?

Traditionally, October is when we really start to notice how the nights draw in with winter just around the corner and Halloween beckoning.

It is, however, a good time to have a real push towards the end of the year now that we are in the home straight.

I always feel that we should have a positive outlook on the final three months and it certainly makes all of the partying

at the end of the year that bit more special.

With this in mind I am delighted that we are able to bring you some more news and views on what has been happening in the past month here at C&G Business Equipment Ltd, and of course, how this can benefit you, our customers.

Please enjoy the read and remember to be prepared for visitors on the 31st...

All the best

Aaron



C&G PRINT AUDIT - LOOKING TO SAVE YOU MONEY

C&G PRINT AUDIT

- Find out how much you are printing
 - Find out where it is being printed
- Find out how to print more cost effectively
- Manage your print output more efficiently

Accurate information is key when it comes to providing a cost effective & more productive print strategy



PLEASE CONTACT ADAM STACEY, SALES CONSULTANT FOR YOUR PRINT AUDIT ON 01452 332270



Effective control with uniFLOW Output Manager

Incorporating uniFLOW Output Manager into your document production process can lead to real improvements in the control and efficiency of print devices.

This powerful software is both modular and configurable, so it can be adapted to fit the specific needs of different businesses: large corporations, small offices, education establishments, local government, copyshops and print rooms.

Accurately measure usage and cost by user, work-group or department – it's simple with uniFLOW Output Manager. Using the detailed reports available, you can make the most effective use of your resources, by minimising output costs and placing devices in areas where they are most needed.

Print and copy accounting for better cost management

Desktop Accounting – Provides office users with key information concerning their network and locally connected printers, allowing administrators to better understand the usage levels and costs associated with printed and copied output.

Integration with identification systems and with the MEAP platform allows allocation of print and copy jobs to cost centres, student accounts and project codes for charging/billing.

Intelligent routing for cost efficiency and print availability

Load Balancing – Print jobs can be automatically routed to the most cost-efficient devices in the office (e.g. colour print jobs from desktop devices to larger Multifunctional printers).



This ensures optimal efficiency and capacity utilisation. Documents can also be diverted to alternative devices (failover) in the event of a problem, such as "out of toner" so staff productivity is unaffected.

Secure printing for added control and confidentiality

Secure Printing – Secure Printing provides users with effective security mechanisms to control the output of sensitive documents.

Print jobs are held at the server and can only be retrieved at the device using an appropriate identification method - ideal for government bodies dealing in sensitive information. "My Print Anywhere" is supported too, so documents can be sent and then printed out at whichever device is most appropriate. For maximum flexibility, many different identification systems can be integrated with uniFLOW Output Manager, including fingerprint readers, chip card readers, magnetic card readers, contactless card readers and keyboard entry.

For a free print audit & uniFLOW consultation, please contact James Fletcher on 01452 332270

Jayne Fisher receives her reward

When we stopped by at the Spring Centre recently to present Jayne Fisher with her bottle of Champagne she was 'pleased as punch' to finally win.

The Spring Centre provides help for children and young people (aged from 0-18yrs) with complex needs and often profound or multiple disabilities. It also supports the parents, carers, brothers and sisters of the children that attend the Centre.

The Centre provides practical help for each family and works with parents to ensure that they can access the services in a way that is appropriate for them.

Each child has an individual care plan and the team of care staff have many years experience working with children and young people who have a wide range of special needs.

To contact Jayne or for further information, the Spring Centre can be found at:

**The Spring Centre
Gardener House
Olympus Park
Quedgeley
Gloucester
GL2 4NF
T:01452 725935**

www.springcentre.org



● Jayne Fisher of the Spring Centre

Partner news - canon

Professional Photographers benefit from extensive Canon support at London Fashion Week

Canon Europe, world-leader in imaging solutions, has celebrated the continuation of its sponsorship of London Fashion Week by providing an exclusive programme of support for professional photographers at this prestigious event.

As principal sponsor for the third year, Canon provided a dedicated support centre for professional photographers on site to ensure that all accredited photographers had everything they needed, from internet access and printers to a dedicated team of Canon support technicians.

In addition, exclusive Canon buses transferred photographers between shows to ensure they didn't miss a moment of the capital's catwalks

Canon is also principal sponsor of Milan Fashion Week and sponsor of Paris Fashion Week.

This extensive support in London builds on Canon's previous European consumer fashion projects, We Speak Image and The Other Side of Fashion, which raised hundreds of thousands of euros for the Red Cross Societies.





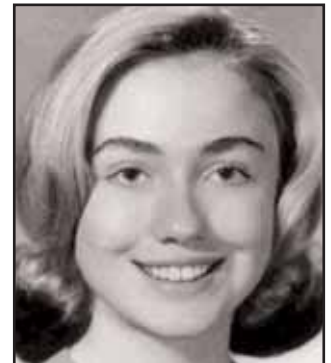
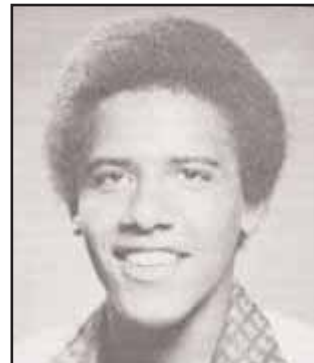
When they were kids

Not many of you were fooled by these two pictures, well, not too many...
The two young hopefuls featured in the last issue were

Barack Obama and Hillary Clinton

The lucky winners were:

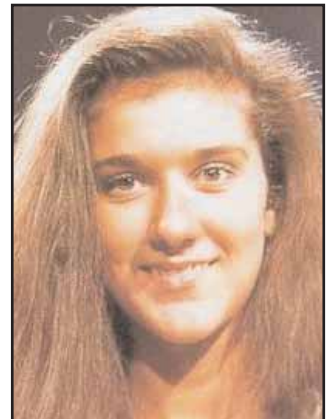
Carole and Rosetta of Genhart Ltd



Well done to you both for being so politically astute!
The bubbly will be with you in the next month and in time for you to be featured in the next issue of The Informer

A couple of young ladies for you this month, both blossomed very well as they got older but can you spot the Welsh and Canadian beauties?

Please email your answers to info@cgcopiers.co.uk and put 'October quiz' in the subject box.
Good luck.



And finally - last month saw...

- Star of the silver screen, Paul Newman, pass away - aged 83*
- Serena Williams win the US Open Ladies' singles championship*
- Former Chairman of British Gas, Denis Rooke, die - aged 84*
- The nationalisation of Bradford & Bingley*
- The Conservative Party hold its annual conference in Birmingham*

Contact us

**C & G Business
Equipment
Unit 13 Capitol Park
Pearce Way
Bristol Road
Gloucester
GL2 5YD**

Tel: 01452 332270

Fax: 01452 332271

info@cgcopiers.co.uk

www.cgcopiers.co.uk